

Emily Gilman Beezley

www.emilygilmanbeezley.com

917 859-5559

egilbeez@gmail.com

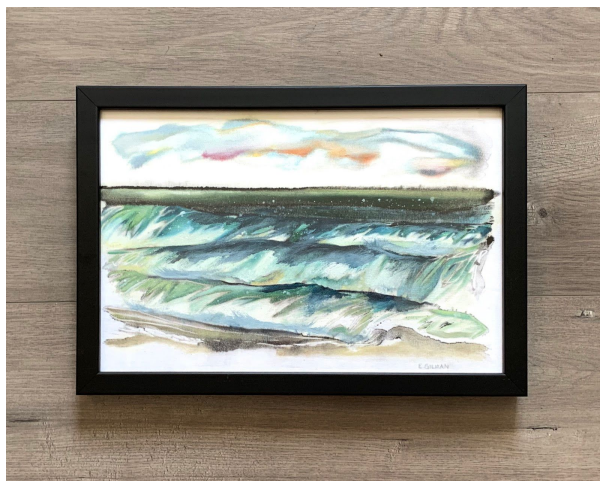


“Surf’s Up”

Oil on Monotype on Canvas Paper
11”H x 16”W

The foundation of "Surf's Up" is a monotype on canvas paper over which I applied color. Monotypes are a form of printmaking where I capture a one-of-a-kind image using black etching ink transferred from a metal plate onto paper or in this case canvas paper. The loose application of Oil paint with areas of unpainted canvas give "Surf's Up" a watercolor effect while the black underlying etching ink provides gravitas to the image.

Part of my "Ocean and Fish" series of dreamscapes.



This artwork is one-of-a-kind authentic, original artwork. All copyright and reproduction rights are reserved by Emily Gilman Beezley.